

2050 SEMPO Metropolitan Transportation Plan Update

Welcome

To the SEMPO
Metropolitan Transportation Plan (MTP)
2050 Update



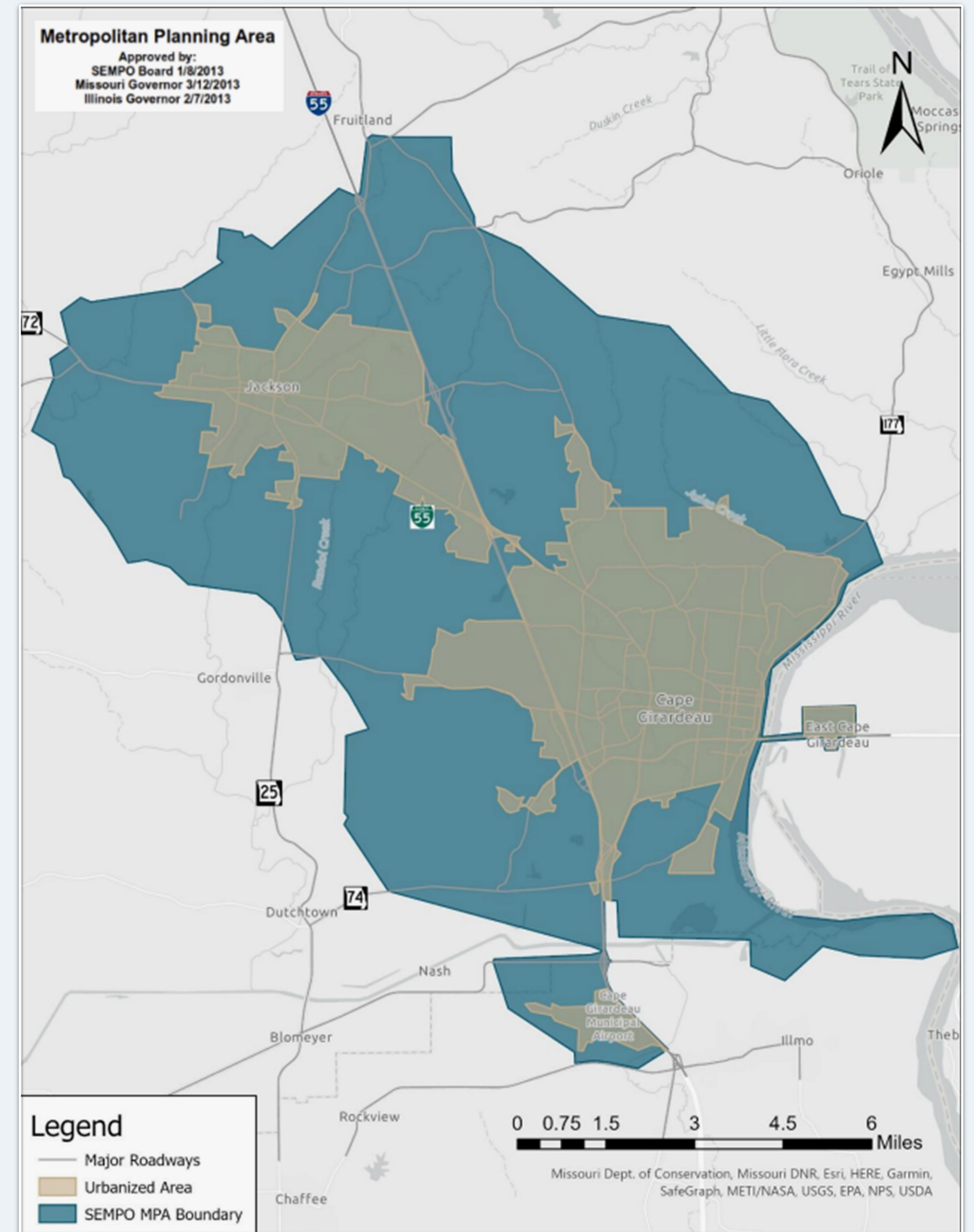
What is SEMPO?

What is SEMPO?

- A regional body that coordinates and plans transportation-related improvements for the designated Metropolitan Planning Area (MPA)
- Consists of representatives from local government and transportation agencies in the region who work together to address the area's needs

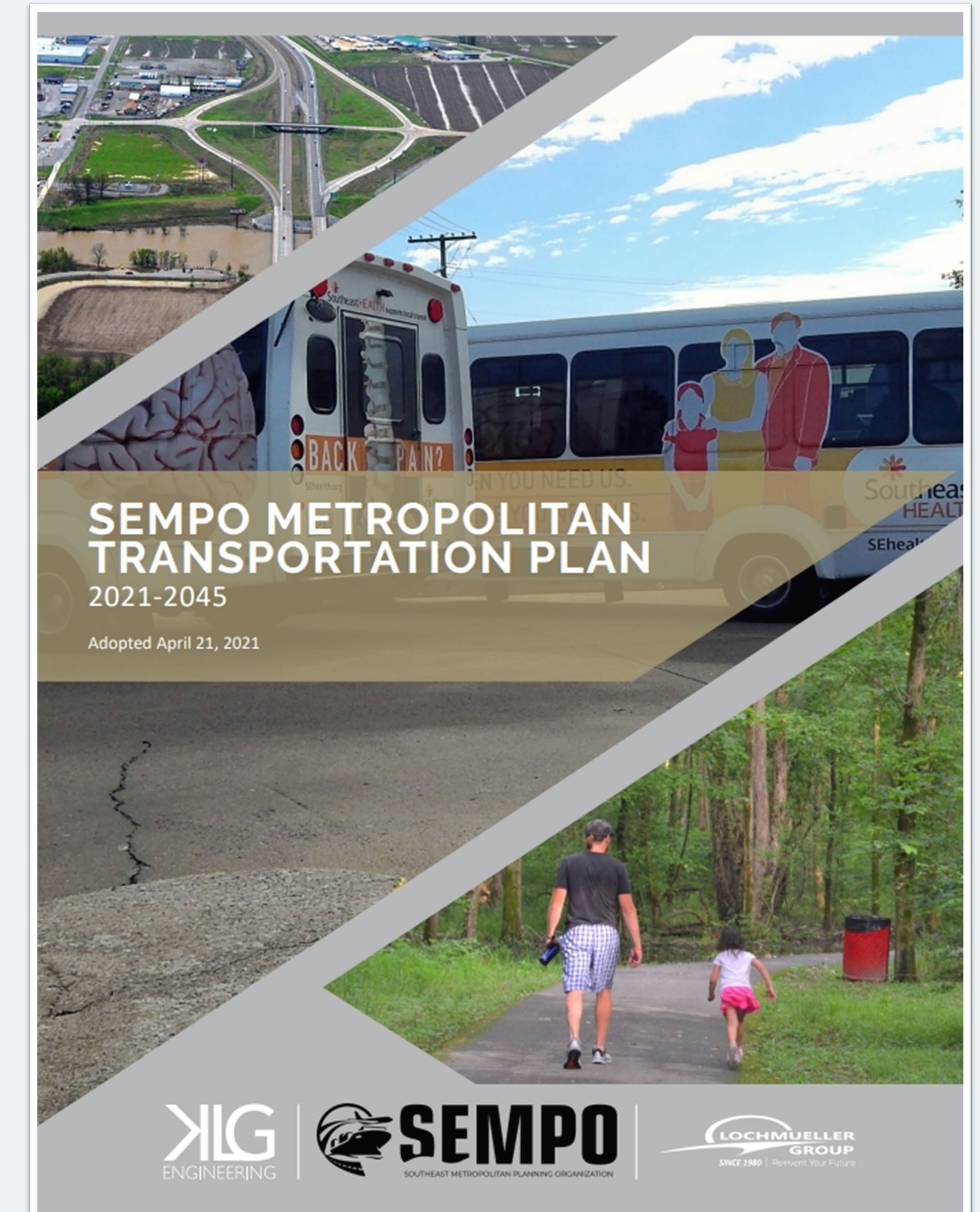
What does SEMPO do?

- Updates a metropolitan transportation plan (MTP) for the region every 5 years that identifies needs and proposes solutions for those needs
- Develops a Transportation Improvement Program (TIP), which prioritizes and funds specific projects proposed in the MTP



What is a Metropolitan Transportation Plan (MTP)?

- A comprehensive, long-range transportation plan
 - Guides development to meet current and future transportation needs over 20-25 years.
 - Federal requirement to receive federal funding for regionally important transportation projects
- Key Components
 - Vision and Goals
 - Existing Conditions
 - Future Needs
 - Strategies and Projects



Why is MTP important?

- Benefits to the Southeast MPA
 - Encourages regionally coordinated transportation planning among a variety of transportation entities
 - Prerequisite to receive federal grants used to fund a significant percentage of regional transportation projects.
- Fulfills federal and state mandates
- Used for long-term planning and sustainability



Jackson Major Street Plan

CITY of JACKSON AND SURROUNDING AREA

MAJOR STREET PLAN 2018

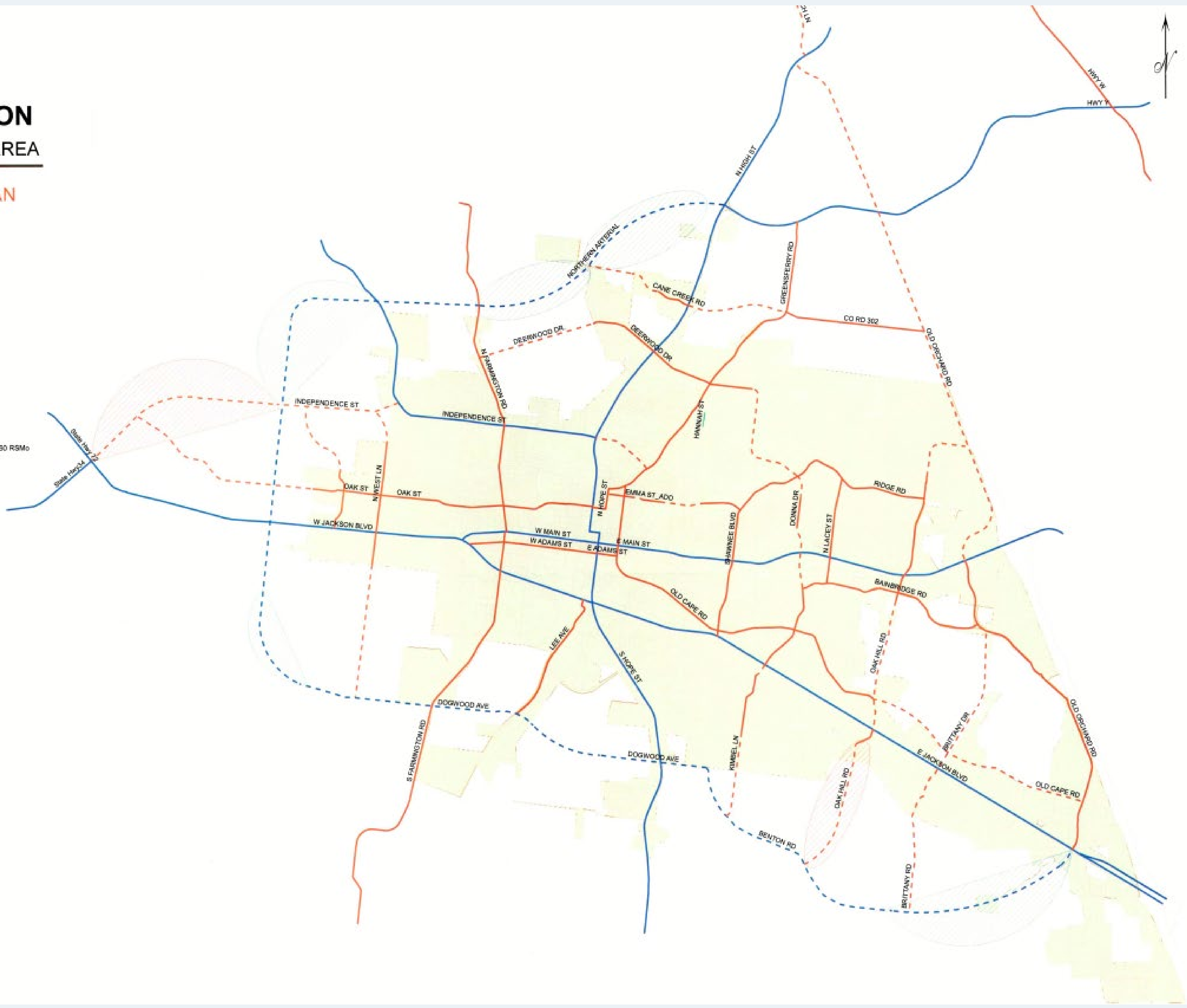


I do hereby attest that this plan has been duly approved by the Planning and Zoning Commission of the City of Jackson in accordance with 88.360 RSMo on June 12, 2017 and as of that date is the official Major Street Plan of the City of Jackson

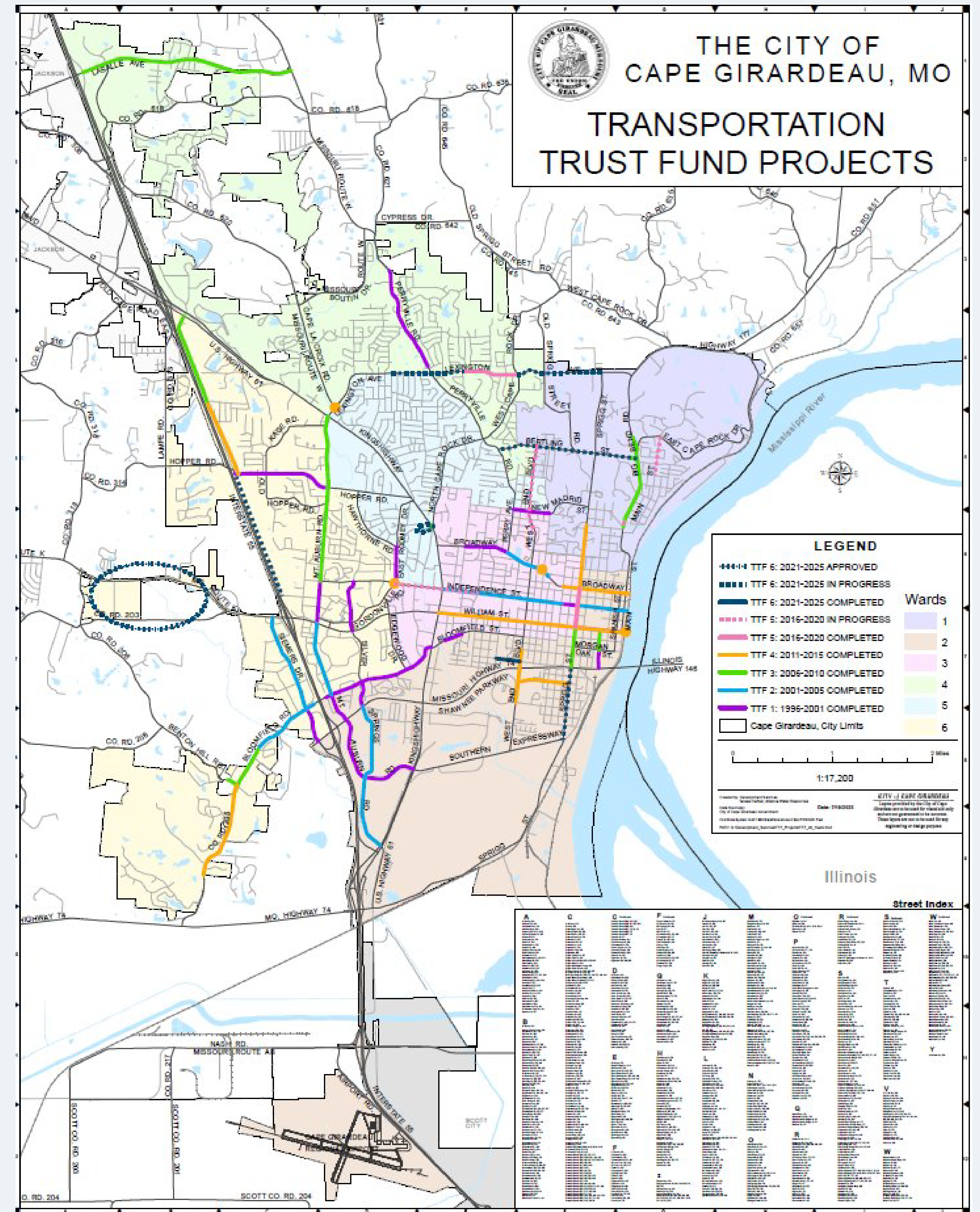
Mike Seabright
Chairman, Planning and Zoning Commission
Tony Koeller
Secretary, Planning and Zoning Commission

Filed for Record
NOV 28 2018
Andrew David Blattner, Recorder
Cape Girardeau County
Jackson, MO

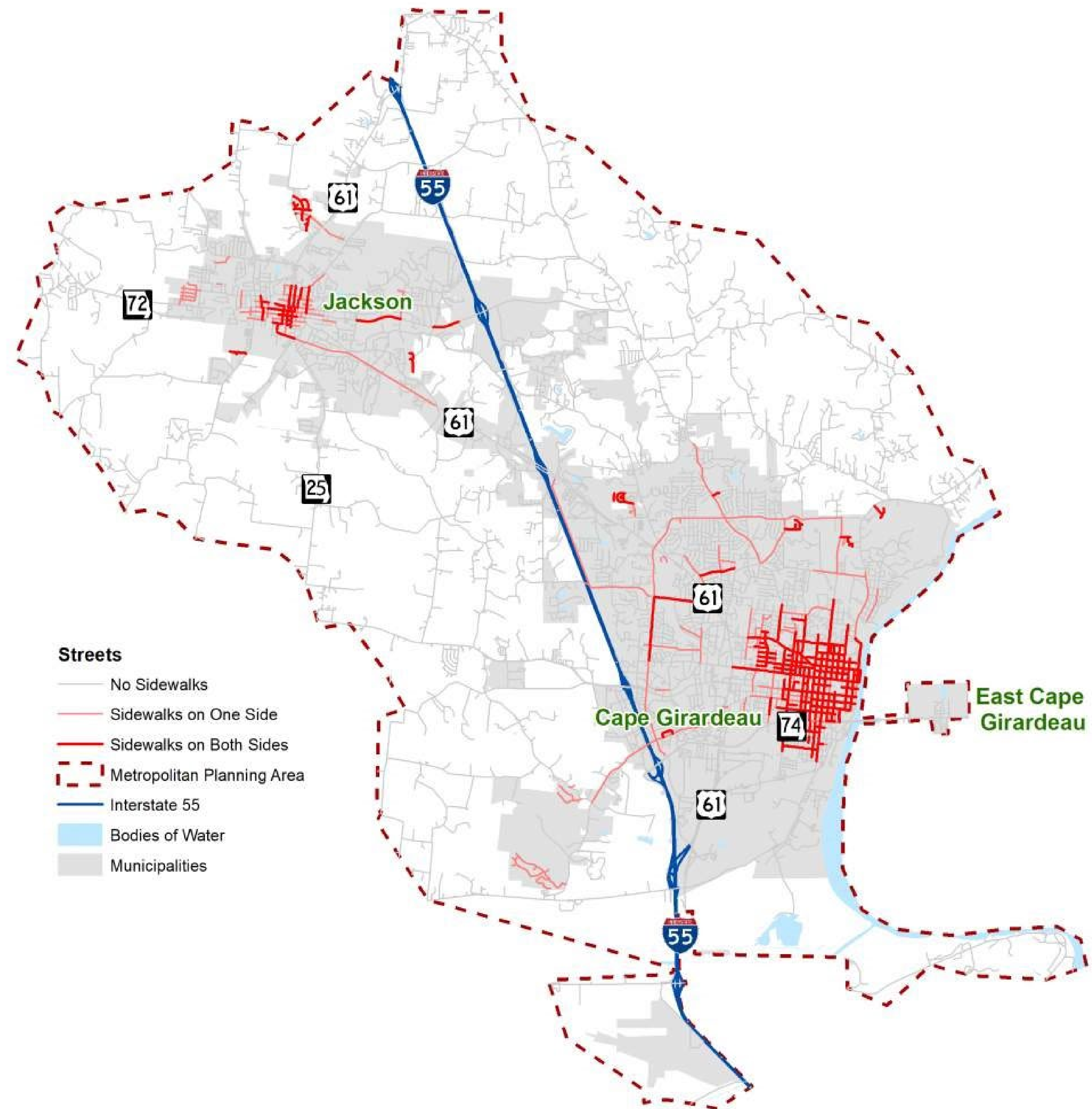
Scale
0 0.075 0.15 0.3 0.45 0.6 Miles
Jackson Building & Planning Dept.
Prepared by: ReKamesDr. 02/2017



City of Cape Girardeau Transportation Trust Fund Projects



Existing Sidewalk Coverage



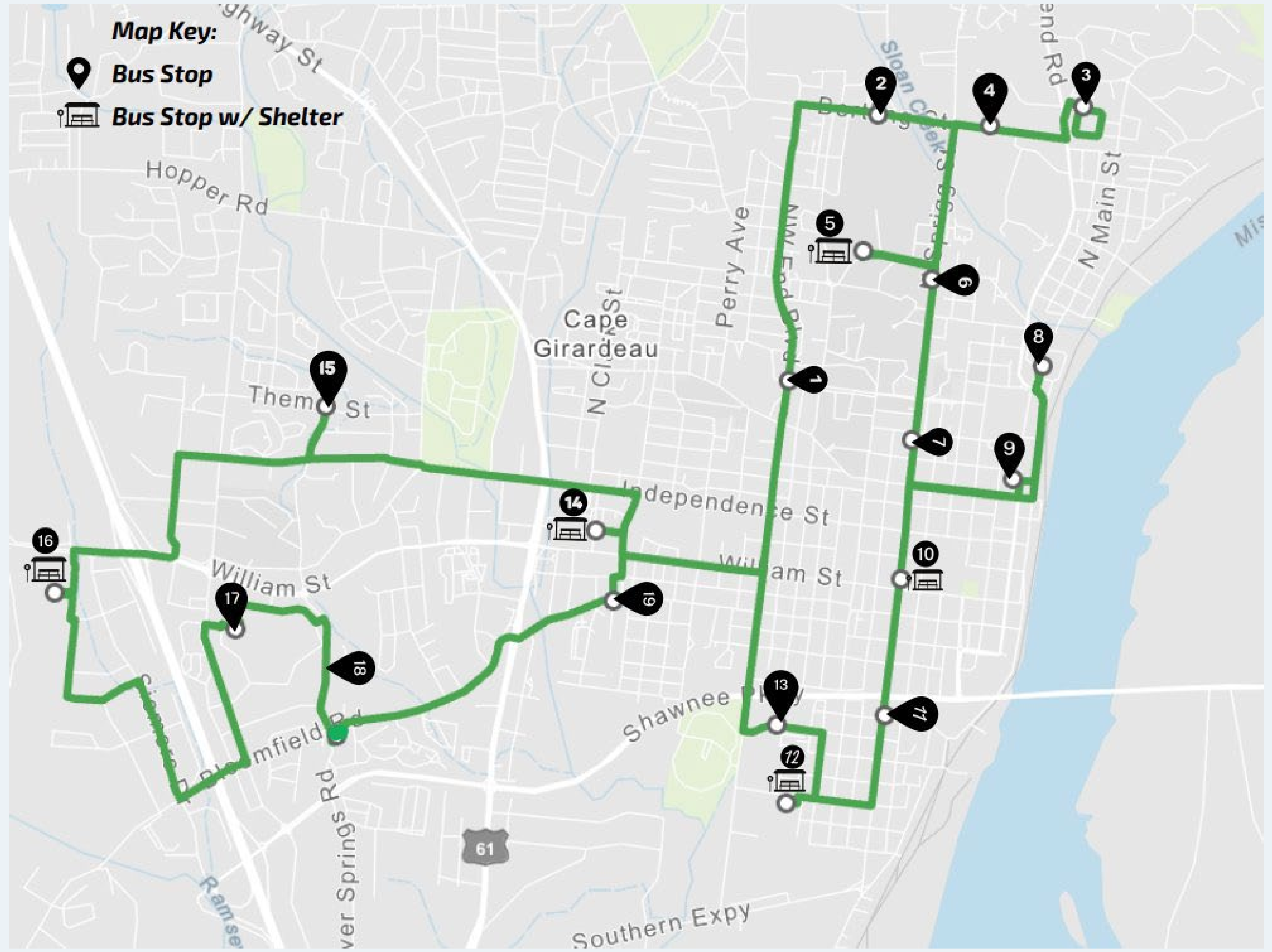
SEMPO Regional Bicycle and Pedestrian Plan

Five Goals

1. Identifying existing deficiencies and develop a priority list to improve safety on existing infrastructure and multi-modal crossings
2. Improve and expand the existing system of on-and off-road facilities connection local and regional destinations
3. Promote use of the transit network by providing accessible connections between non-motorized transportation infrastructure and transit routes
4. Implement education and encouragement campaigns to inform the public of the health, social, and economic benefits of active transportation
5. Pursue funding for both multi-modal infrastructure improvements and education campaigns



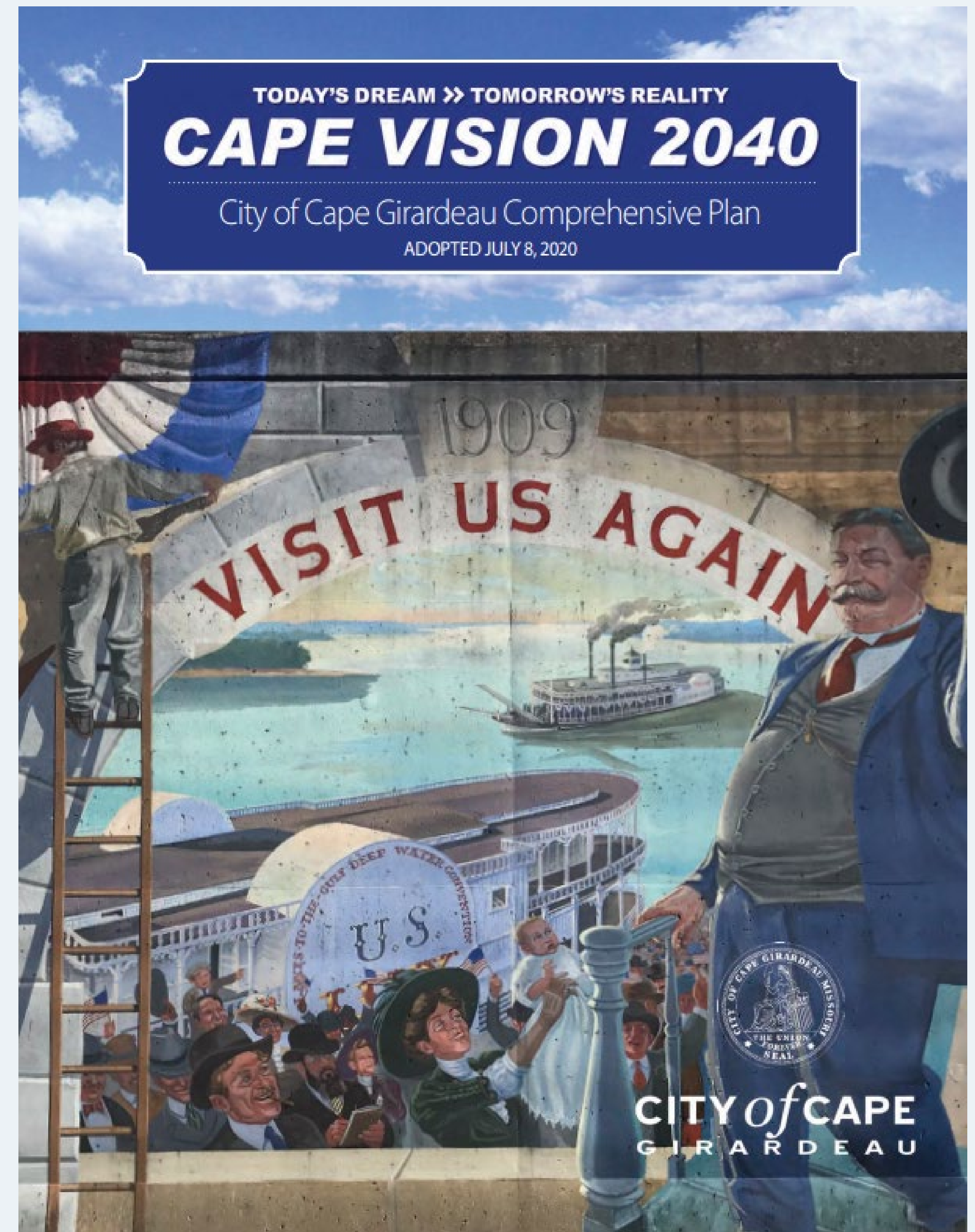
Cape Girardeau County Bus Routes



City of Cape Girardeau Comprehensive Plan

Key Themes:

- More event spaces, festivals, concerts, and restaurants along the river
- Focus on attracting businesses and high-paying jobs
- Revitalization of older neighborhoods
- Bicycle and pedestrian improvements
- Redevelopment and beautification of Midtown and key community gateways
- More outdoor family-oriented activities



City of Jackson Comprehensive Plan

Key Goals cover topics such as:

- Land Use and Development
- Housing and Neighborhoods
- Commercial and Industrial Areas
- Transportation and Circulation
- Community Facilities, Services, and Infrastructure



CITY OF
JACKSON
MISSOURI

Comprehensive Plan

Adopted November 13, 2024

Other Key Plans Considered

- Cape Girardeau Airport Master Plan
 - Cape Girardeau County Emergency Management Plan
 - Cape Girardeau County Hazard Mitigation Plan
 - City of Cape Girardeau Complete Streets Policy
 - City of Cape Girardeau Comprehensive Plan
 - City of Cape Girardeau Major Street Plan
 - City of Jackson Comprehensive Plan
 - Illinois Statewide Transportation Improvement Program
 - Jackson Bridge Plan
 - Jackson Comprehensive Transportation Plan
 - Jackson Park Master Plan
 - Jackson Historical Architectural Survey of Downtown
 - Jackson Major Street Plan
 - Jackson Safe Across Initiative
 - Missouri River Freight Corridor Assessment & Development Plan
 - Missouri State Highway Safety & Performance Plan
 - Missouri State Rail Plan
 - Missouri Statewide Transportation Improvement Program
 - MoDOT Blueprint for Safety
 - MoDOT Statewide Freight Plan
 - SEMPO Public Transit-Human Services Transportation Coordination Plan
 - SEMO RPC Long Range Transportation Plan
 - SEMPO Comprehensive Safety Action Plan
 - SEMPO Regional Trail Connection Study
 - SEMPO ADA Transition Framework Plan
 - SEMPO Regional Bicycle and Pedestrian Plan
-

Who We Have Talked to

Transit:

Shawnee Transit Group
Cape Girardeau Transit Authority (CTA)
United Way
ManPower
SEMO – University International Student Services

Emergency Management:

City of Jackson Fire Department

Bicycle and Pedestrian:

Cape Girardeau Parks and Recreation
City of Jackson Public Works

Aviation:

SEMO – University International Student Services
Representative of the local pilot community

Economic Development and Tourism:

SEMO Redi
Cape Girardeau Chamber of Commerce
Uptown Jackson
Visit Cape
Old Town Cape

Accessibility:

City of Cape Girardeau

Neighborhood:

United Way
SEMO University

Freight:

Buzzi Unicem USA
Union Pacific



What We Have Heard So Far

- **Regional Connectivity:** There are limited options to travel to/from the Cape Girardeau region other than by private car. There are limited flights to Cape Girardeau airport, no Greyhound service to the area, and the closest Amtrak stop is at Carbondale. There was discussion that there are efforts to bring Greyhound service back to the region.
- **Roadways:** The I-55/MO 74 interchange and Bloomfield Road overpass were discussed as areas needing improvement
- **Bicycles and Pedestrians:** Getting around the SEPMO area without a car can be challenging. There are gaps in connectivity in the local sidewalk/trail system in some areas. The region has plans for improving and better connecting regional pedestrian and bicycle facilities that making those improvements and connections will take some time. One issue is that the region has poor driver compliance in yielding to pedestrians using crosswalks. Jackson has started a “SafeAcross” program in response to make it easier for people to cross the street.
- **Transit:** Many people are unaware of available transit service, especially that it is free. However, the system saw a 24% increase in ridership over the past year, especially an increase in seniors. The system added a line added July 1, 2025, with a bus at each stop every 30 minutes. There is interest in expanding the transit system’s hours of operations.
- **Riverfront Access:** There is a desire for better access to the Mississippi riverfront. The railroad tracks present a barrier to that access.
- **Industrial Traffic:** Jackson Blvd (Hwy 72) carries a high volume of heavy truck traffic through Downtown Jackson.

HOW DO YOU WANT TO GET AROUND THE CAPE GIRARDEAU-JACKSON REGION IN THE FUTURE? SHARE YOUR INPUT AT OUR PUBLIC OPEN HOUSES!

OPEN HOUSES

Help shape the 2050 Metropolitan Transportation Plan for our region.

SEMPO
2050 METROPOLITAN TRANSPORTATION PLAN

Connecting People. Driving Progress.

CAPE GIRARDEAU
Monday, July 21
4:00pm - 6:00pm
Osage Centre - City of Cape Girardeau Parks & Recreation Department
1625 N Kingshighway St.
Cape Girardeau, MO 63701

JACKSON
Tuesday, July 22
4:00pm - 6:00pm
Jackson Civic Center
381 E Deerwood Dr.
Jackson, MO 63755

Discuss the Metropolitan Transportation Plan (MTP) for the Cape Girardeau-Jackson region.

Provide your feedback to the planning team.

Help shape a safer, more connected future for our community.

G B B TRANSPORTATION ENGINEERS-PLANNERS SEMPO

INTERACTIVE DISPLAYS • Q&A STATIONS • PRIORITY VOTING

Feedback Board 1

What is working well? Add your dots here!

Traffic congestion is well managed
“You can get anywhere in town in 20 minutes”

Bus service makes getting around town easy

Biking and walking is safe and easy

The roads are well maintained

Parking is generally available and easy to find

Add your thoughts

Feedback Board 2

What should be improved? Add your dots here!

Bus routes and hours of operation make the bus difficult to use

The condition of sidewalks can make it hard to use them

There are limited options to get to the Cape Girardeau area other than by car

The bicycle system is not connected

Lack of streetlights makes it difficult to walk and bicycle at night

Add your thoughts

Feedback Map

Add your comments to the map.

Welcome

To the SEMPO
Metropolitan Transportation Plan (MTP)
2050 Update

**Please take the survey or leave your
comments here!**



<https://forms.office.com/r/UYnEciUCxL>

